

**PORTALED ASSEMBLATI**

**Portaled singolo T-1 3/4**

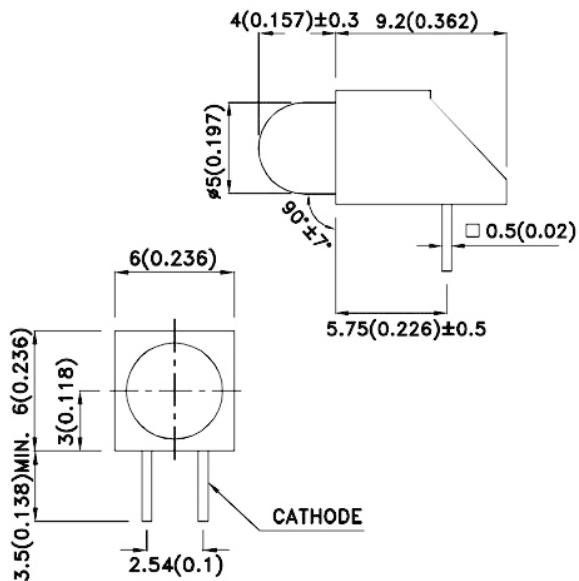
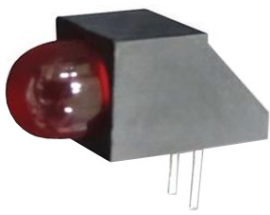
ø5 mm

Codice Adimpex: **OU022915-R**

BARRA LED L-1503CB/1YD GIA

Serie:L-1503CB/1

p/n:L-1503CB/1YD



Codice Adimpex	Colore	λD (nm)	Tipo di lente	Intensità luminosa (mcd)			Angolo di visione 2θ1/2
				min.	typ.	@mA	
<b>OU022905</b> L-1503CB/1ID	Rosso	625	diffused	8	30	10	60°
<b>OU022925</b> L-1503CB/1SRD	Rosso	640	diffused	380	700	20	60°
<b>OU022920</b> L-1503CB/1GD	Verde	568	diffused	5	20	10	60°
<b>OU022915</b> L-1503CB/1YD	Giallo	588	diffused	5	20	10	60°