

PORTALED ASSEMBLATI

Portaled bi-color T-1

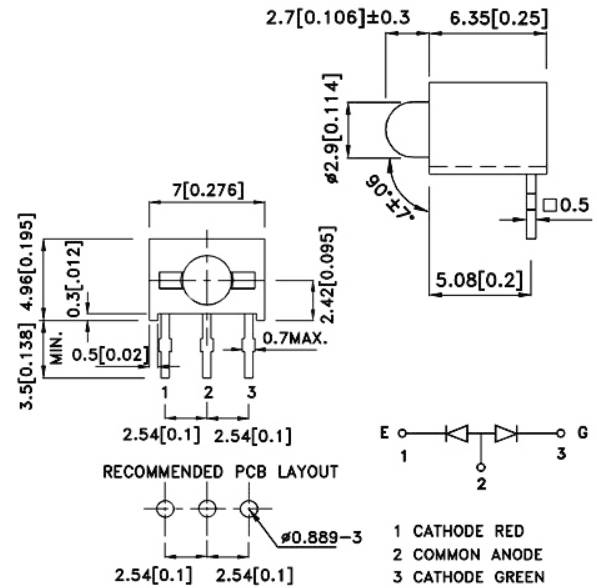
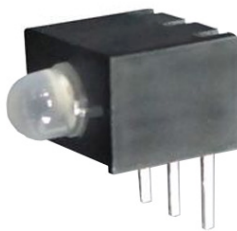
ø3 mm

Codice Adimpex: **OU022023-R**

BARRA LED L-130WDT/1EGW-CA A/V

Serie:L-103WDT/1

p/n:L-130WDT/1EGW-CA



Codice Adimpex	Colore	λD (nm)	Tipo di lente	Intensità luminosa (mcd)			Angolo di visione 201/2
				min.	typ.	@mA	
OU022023 L-130WDT/1EGW-CA	Rosso	617	diffused	1.2	4	20	60°
	Verde	568		3	8	20	
OU022022 L-130WDT/1EGW	Rosso	625	diffused	12	30	20	60°
	Verde	568		12	30	20	