

Led

LED T-1 3/4 Ø5MM BIANCO (6073K) TYP. 21000MCD 15° IN REEL

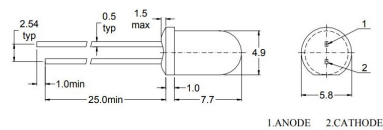
HL508H256WC 5mm 21C 15° C BIA(6073K)

Codice Adimpex: **OFA05198JI**

P/N: **HL-508H256WC-HD-BF**



Dimensions



Tolerance Grade/公差等级	Dimension Tolerance/尺寸 (Unit:mm)			
	0.5-3	3-6	6-30	30-120
	±0.1	±0.2	±0.3	±0.5
Chip/晶片		Lens Color/胶体颜色		
Material/材质	Emitting Color/ 发光颜色		Water Clear/无色透明	
GaN	White/白色			

Caratteristiche Tecniche:

Intensità luminosa tipica (mcd):	>5001
Corrente Led (mA):	10-20
Angolo visivo:	15°
Colore:	Bianco freddo
Tipo lente:	Diffused
Gamma:	Led
Dome Lens:	No
Alimentazione reverse:	No
Diametro PTH:	Ø5mm
Montaggio:	PTH