

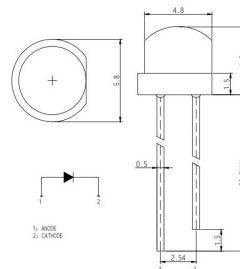
Led

LED CIRCOLARE Ø5MM BIANCO (6740K) TYP. 1000MCD 120°

HL798H256WC 5mm 1C 120° C BIA(6740K)

Codice Adimpex: **OFA05115JI**

P/N: **HL-798H256WC-MD-6500K**



Tolerance Grade	Dimension Tolerance (UNIT:mm)			
	0.5-3	3-6	6-30	30-120
Medium(m)	±0.1	±0.2	±0.3	±0.5
Chip		Lens Color		
Material	Emitting Color	Water Clear		
InGaN	White			

Caratteristiche Tecniche:

Intensità luminosa tipica (mcd):	>5001
Corrente Led (mA):	10-20
Angolo visivo:	120 °
Colore:	Bianco neutral
Gamma:	Led
Dome Lens:	No
Alimentazione reverse:	No
Diametro PTH:	Ø5mm
Montaggio:	PTH
Tipo lente:	Water clear