

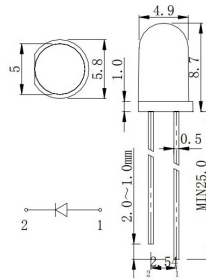
Led

LED T-1 3/4 Ø5MM BIANCO (3352K) TYP. 4500MCD 30°

HL508H193WC 5mm 4.5C 30° C BIA(3352K)*

Codice Adimpex: **OFA05060-R**

P/N: **HL-508H193WC-1**



Tolerance	Dimension Tolerance (UNIT:mm)			
Grade	0.5-3	3-6	6-30	30-120
Medium(m)	±0.1	±0.2	±0.3	±0.5
Chip		Lens Color		
Material	Emitting Color	Water Clear		
InGaN	White			

Caratteristiche Tecniche:

Intensità luminosa tipica (mcd):	1001-5000
Corrente Led (mA):	10-20
Angolo visivo:	30 °
Colore:	Bianco caldo
Gamma:	Led
Dome Lens:	No
Alimentazione reverse:	No
Diametro PTH:	Ø5mm
Montaggio:	PTH
Tipo lente:	Water clear