

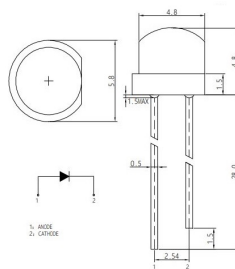
Led

LED CIRCOLARE Ø5MM BIANCO (3245K) TYP. 1320MCD 120°

HL798H256WC 5mm 1.32C 120° C BIA(3245K)

Codice Adimpex: **OFA05050JI**

P/N: **HL-798H256WC-MD-3200K**



Tolerance Grade	Dimension Tolerance (UNIT:mm)			
	0.5-3	3-6	6-30	30-120
	±0.1	±0.2	±0.3	±0.5
Chip		Lens Color		
Material	Emitting Color	Water Clear		
InGaN	White			

Caratteristiche Tecniche:

Intensità luminosa tipica (mcd):	1001-5000
Corrente Led (mA):	10-20
Angolo visivo:	120 °
Colore:	Bianco caldo
Gamma:	Led
Dome Lens:	No
Alimentazione reverse:	No
Diametro PTH:	Ø5mm
Montaggio:	PTH
Tipo lente:	Water clear