

**MINI MATCH PASSO 2.54MM**

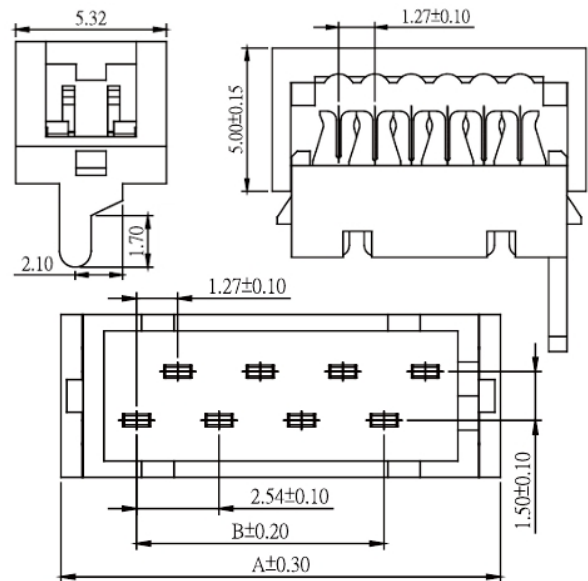
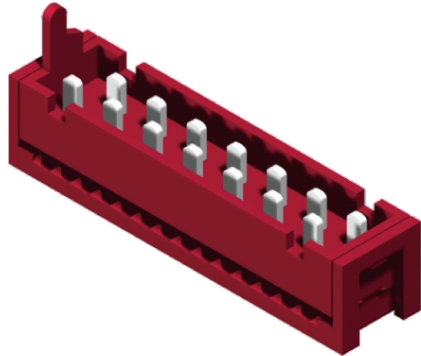
**Mini match box plug IDC**

Codice Adimpex: **LH180310-R**

CONNET MINI MATCH MIBPI3-10TRL

Serie: MIBPI3

p/n: MIBPI3-10TR-L



Codice Adimpex	n. posizioni	A	B
LH180304	04	8.45	2.54
LH180306	06	10.99	5.08
LH180308	08	13.53	7.62
<b>LH180310</b>	10	16.07	10.16
LH180312	12	18.61	12.70
LH180314	14	21.15	15.24
LH180316	16	23.69	17.78
LH180318	18	26.23	20.32
LH180320	20	28.77	22.86

**CARATTERISTICHE**

- Corrente: 1.0A
- Resistenza d'isolamento: 1000MΩ Min
- Resistenza di contatto: 20mΩ Max
- Resistenza dielettrica: 500V AC for 1 minute
- Temperatura operativa: -40°C ÷ 105°C (-25°C ÷ 58°C per MIDPI3)
- Case: Poliestere, UL94V
- Standard: P.B.T.
- Terminali: lega di rame

**FEATURES**

- Current rate: 1.0A
- Insulation resistance: 1000MΩ Min
- Contact resistance: 20mΩ Max
- Dielectric voltage: 500V AC for 1 minute
- Operation temperature: -40°C ÷ 105°C (-25°C ÷ 58°C for MIDPI3)
- Insulator: polyester, UL94V
- Standard: P.B.T.
- Terminal: copper alloy