

MINI MATCH PASSO 2.54MM

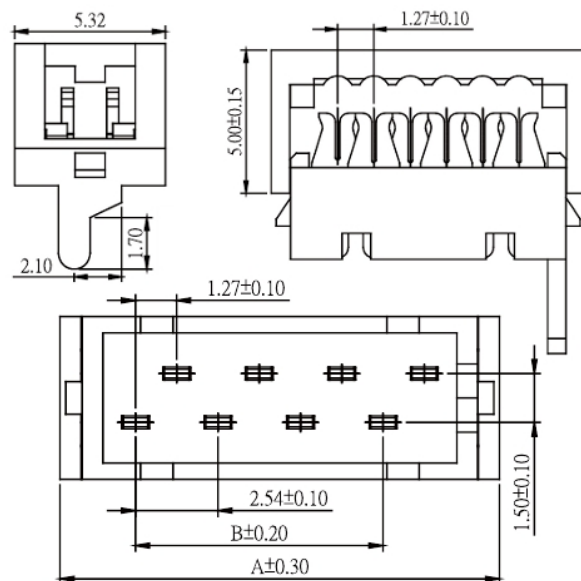
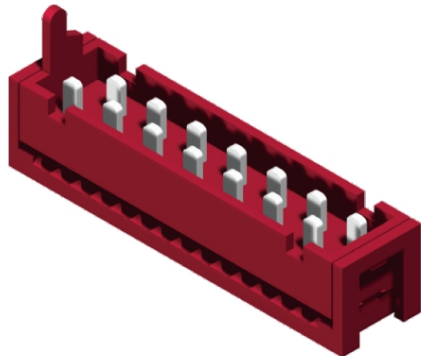
Mini match box plug IDC

Codice Adimpex: **LH180304-R**

CONNET MINI MATCH MIBPI3-04TRL

Serie: MIBPI3

p/n: MIBPI3-04TR-L



Codice Adimpex	n. posizioni	A	B
LH180304	04	8.45	2.54
LH180306	06	10.99	5.08
LH180308	08	13.53	7.62
LH180310	10	16.07	10.16
LH180312	12	18.61	12.70
LH180314	14	21.15	15.24
LH180316	16	23.69	17.78
LH180318	18	26.23	20.32
LH180320	20	28.77	22.86

CARATTERISTICHE

- Corrente: 1.0A
- Resistenza d'isolamento: 1000MΩ Min
- Resistenza di contatto: 20mΩ Max
- Resistenza dielettrica: 500V AC for 1 minute
- Temperatura operativa: -40°C ÷ 105°C (-25°C ÷ 58°C per MIDPI3)
- Case: Poliestere, UL94V
- Standard: P.B.T.
- Terminali: lega di rame

FEATURES

- Current rate: 1.0A
- Insulation resistance: 1000MΩ Min
- Contact resistance: 20mΩ Max
- Dielectric voltage: 500V AC for 1 minute
- Operation temperature: -40°C ÷ 105°C (-25°C ÷ 58°C for MIDPI3)
- Insulator: polyester, UL94V
- Standard: P.B.T.
- Terminal: copper alloy