

### INTERRUTTORI MINIATURA A LEVA

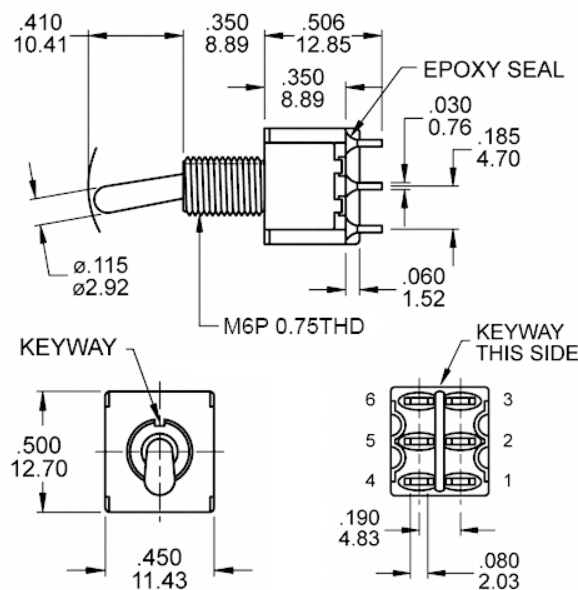
#### Doppio terminali a saldare




Codice Adimpex: **KWS00332-R**

WT1063-WT1B0SE D-ST O-F-O \*

Serie: WT106-W

p/n: WT1063-WT1B0SE



Codice Adimpex	circuito	funzione		
				
KWS00330	DPDT	on	none	on
KWS00331	DPDT	on	none	(on)
<b>KWS00332</b>	DPDT	on	off	on
KWS00333	DPDT	(on)	off	(on)
KWS00334	DPDT	on	off	(on)
KWS00335	DPDT	on	on	on

#### CARATTERISTICHE

- Corrente nominale: 5A 120V AC o 28V DC; 2A 250V AC
- Resistenza di contatto: < 10mΩ @ 2-4V DC 100mA
- Resistenza d'isolamento: 1000MΩ min.
- Rigidità dielettrica: 1000V RMS
- Vita elettrica: 40000 cicli a pieno carico
- Attuatore: ottone cromato
- Bussola: ottone nichelato
- Corpo: acciaio inossidabile
- Supporto switch: ottone stagnato
- Terminali e contatti: lega di rame argentati
- Gamma di temperatura: -30°C ÷ 85°C

#### FEATURES

- Current rating: 5A 120V AC or 28V DC; 2A 250V AC
- Contact resistance: < 10mΩ @ 2-4V DC 100mA
- Insulation resistance: 1000MΩ min.
- Dielectric withstanding: 1000V RMS
- Operating life: 40000 cycles at full load
- Actuator: brass, chrome plated
- Bushing: brass, nickel plated
- Housing: stainless steel
- Switch support: brass, tin plated
- Terminals and contacts: copper alloy, silver plating
- Operating temperature: -30°C ÷ 85°C