

### INTERRUTTORI TATTILI

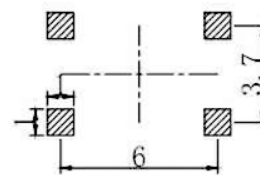
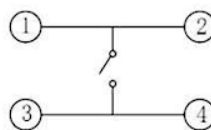
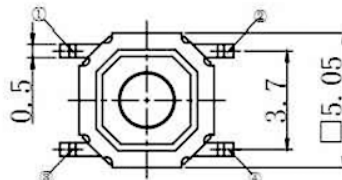
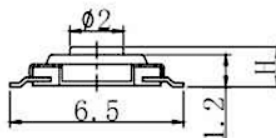
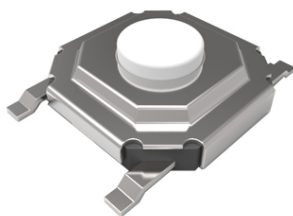
#### 5 x 5 SMD

Codice Adimpex: **KTH36215KA**

Tsmd TSB05311-015-180-1.5 RP

Serie: TSB05311

p/n: TSB05311-015 H=1.5



Codice Adimpex		H	corsa
forza di attuazione: <b>180 ± 50 gf</b>	forza di attuazione: <b>280 ± 50 gf</b>		
<b>KTH36215</b>	<b>KTH36415</b>	1.5	0.25
<b>KTH36216</b>	<b>KTH36416</b>	1.6	0.25
<b>KTH36217</b>	<b>KTH36417</b>	1.7	0.25
<b>KTH36243</b>	<b>KTH36443</b>	4.3	0.25

#### CARATTERISTICHE

- Portata: 50mA 12V DC
- Resistenza di contatto: 0.03Ω max.
- Resistenza d'isolamento: 100MΩ min.
- Rigidità dielettrica: 250V AC per 1 minuto
- Gamma di temperatura: -25°C ÷ 70°C

#### FEATURES

- Portata: 50mA 12V DC
- Contact resistance: 0.03Ω max.
- Insulation resistance: 100MΩ min.
- Dielectric withstanding: 250V AC or 1 minute
- Operating temperature: -25°C ÷ 70°C