

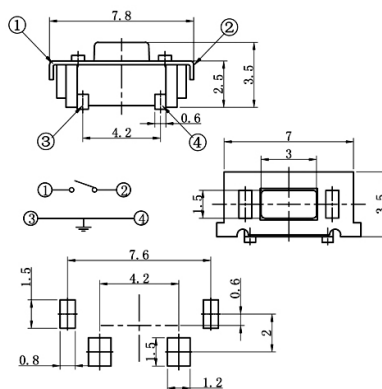
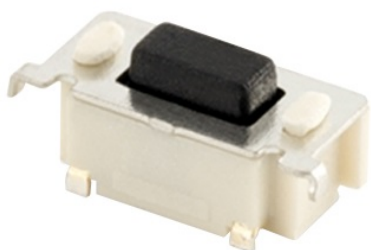
Tact switches

SMD 3X6MM 90° H3.5MM 180GR. RETTANGOLARE

Tsmd TSB36491-035-180g RP

Codice Adimpex: **KTH35234KA**

P/N: **TSB36491-035D341DA-L2000**



Caratteristiche Tecniche:

Forza attuazione:	180 Gr.
Altezza:	3.5 mm
Dimensione (mm):	3x6
Orientamento:	90 gradi
Attuatore quadrato:	No
Già munito di cappuccio:	No
Dustproof:	No
Montaggio:	SMD
Gamma:	Tact Switches