

## INTERRUTTORI TATTILI

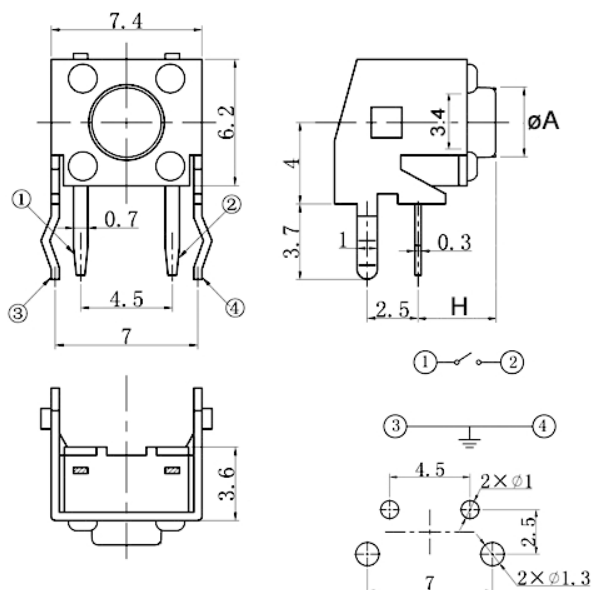
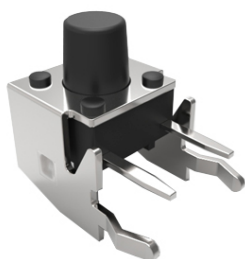
**6 x 6**

Codice Adimpex: **KTH02190-R**

T.S. DJ-1102LD-250-8.35 BU66\*\*

Serie: TSA06231

p/n:1102LD-3



Codice Adimpex		H	A	corsa
forza di attuazione: $180 \pm 50$ gf	forza di attuazione: $280 \pm 50$ gf			
KTH01110	KTH02110	3.15	3.4	0.25
KTH01120	KTH02120	3.85	3.5	0.25
KTH01150	KTH02150	6.85	3.2	0.25
KTH01160	<b>KTH02190</b>	8.35	3.1	0.25
KTH01180	KTH02193	11.35	3.1	0.25
KTH01185	KTH02194	11.85	3.2	0.25
KTH01198	KTH02199	15.85	3.2	0.25

### CARATTERISTICHE

- Portata: 50mA 12V DC
- Resistenza di contatto:  $0.03\Omega$  max.
- Resistenza d'isolamento:  $100M\Omega$  min.
- Rigidità dielettrica: 250V AC per 1 minuto
- Gamma di temperatura:  $-25^{\circ}\text{C} \div 70^{\circ}\text{C}$

### FEATURES

- Portata: 50mA 12V DC
- Contact resistance:  $0.03\Omega$  max.
- Insulation resistance:  $100M\Omega$  min.
- Dielectric withstanding: 250V AC or 1 minute
- Operating temperature:  $-25^{\circ}\text{C} \div 70^{\circ}\text{C}$