

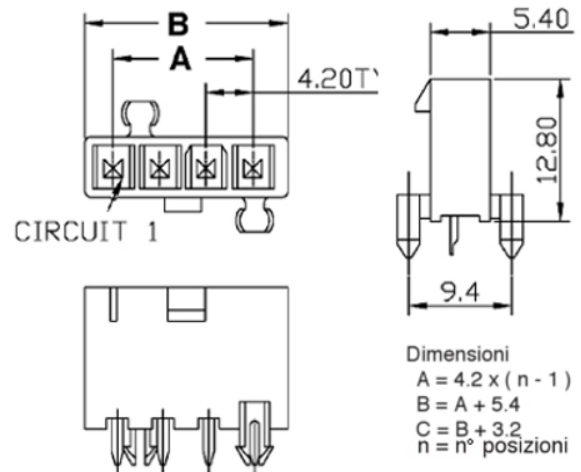
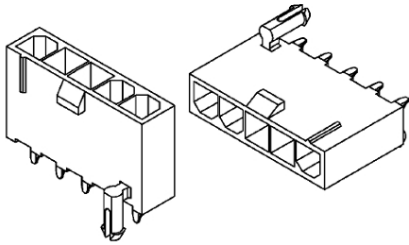
**4202 Maschio dritto con polarizzatore**

Codice Adimpex: **J4202403-R**

CONN.MS 4.2 EX4202WS-03P w/p

Serie:4202-WS

p/n:420203WS051



Codice Adimpex	n. posizioni
J4202402	2
<b>J4202403</b>	3
J4202404	4
J4202405	5
<i>Uniche posizioni disponibili</i>	