

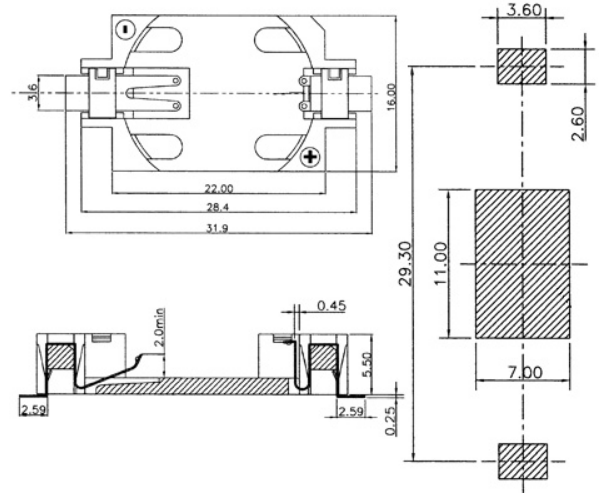
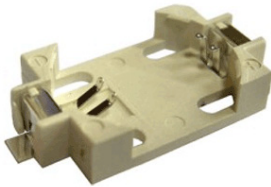
PORTA BATTERIE A BOTTONE

CH28-2032 SMD per batteria tipo CR2032

Codice Adimpex: **GR000200-R**

PORTA PILA smd CH28-2032 *

Serie:CH28-2032
p/n:CH28-2032LF



Codice Adimpex

GR000200

GR000201

confezione

bulk

reel

CARATTERISTICHE

- Contatto:
bronzo fosforoso
rame berillio (serie **BH-005/BH-008**)
- Finitura: stagno su nickel
- Resistenza d'isolamento: >500 MΩ, 500V DC
- Resistenza di inter-contatto: <30mΩ

FEATURES

- Contact:
phosphor bronze
copper beryllium (**BH-005/BH-008 series**)
- Finish: tin plated over nickel
- Insulation resistance: >500 MΩ, 500V DC
- Inter-contact resistance: <30mΩ