

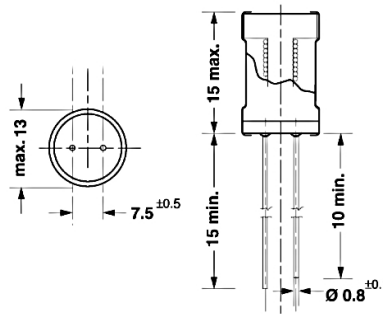
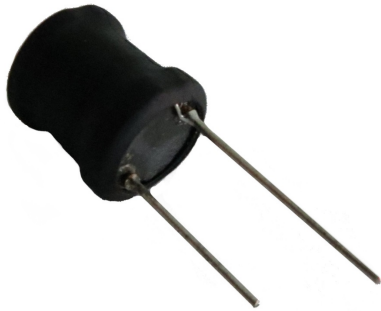
Induttori e toroidi

**RADIALE SERIE CWCD 68UH 3.2A**

IND.RAD.CWCD-680KNP 68uH 3.2A

Codice Adimpex: **FH100068-R**

P/N: **CWCD-680K-NP**



Caratteristiche Tecniche:

L (uH):	68
Pitch (mm):	7.5
Tipologia:	Induttori di blocco radiali PTH
Dimensione (mm):	Ø13 H15.0