

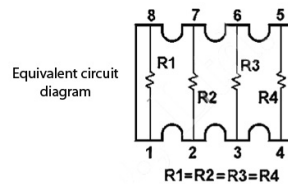
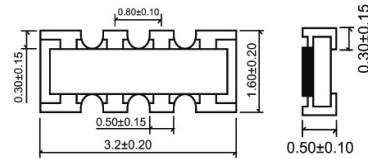
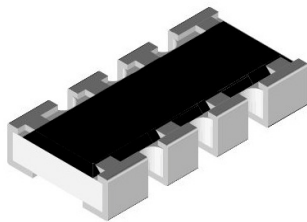
Resistori

CHIP ARRAY 4D03 $\pm 5\%$ 1/16W 33 Ω

RETI RES.SMD 4D03 1/16W J 33R **

Codice Adimpex: **ABC20033AD**

P/N: **4D03 5% 33R**



Caratteristiche Tecniche:

Tolleranza:	$\pm 5\%$
Potenza (W):	1/16 W
Resistenza (Ohm):	33
Case:	4D03
Tipologia:	Chip array
Gamma:	Resistori SMD