

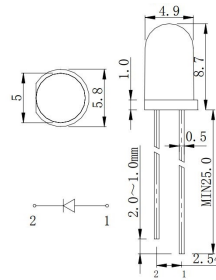
Led

LED T-1 3/4 Ø5MM BIANCO (3445K) TYP. 8500MCD 15°

HL508H193WC 5mm 8.5C 15° C BIA(3445K)

Codice Adimpex: **OFA05008JI**

P/N: **HL-508H193WC-**



Tolerance Grade	Dimension Tolerance (UNIT:mm)			
	0.5-3	3-6	6-30	30-120
Medium(m)	±0.1	±0.2	±0.3	±0.5
Chip		Lens Color		
Material	Emitting Color	Water Clear		
InGaN	White			

Caratteristiche Tecniche:

Intensità luminosa tipica (mcd):	>5001
Angolo visivo:	15°
Colore:	Bianco caldo
Gamma:	Led
Dome Lens:	No
Alimentazione reverse:	No
Diametro PTH:	Ø5mm
Montaggio:	PTH
Tipo lente:	Water clear