

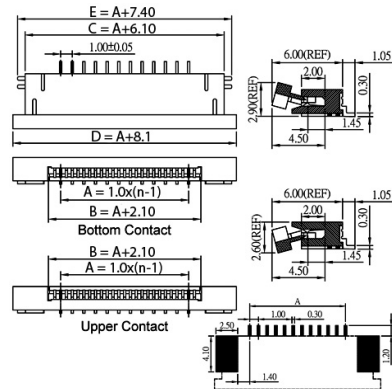
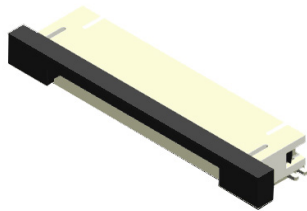
Connettori FPC/FFC

CONNETTORE FPC SMD INGRESSO LATERALE PASSO 1.0MM

CONN ZIF 1.0 FPA16WZB-R1K5-H-CN

Codice Adimpex: **LJ004816AU**

P/N: **FPA16WZB-R1K5-H-CN**



Caratteristiche Tecniche:

Passo:	1 mm
Pin totali:	16
Orientamento:	90 gradi
Orientamento contatti:	Bottom
Tipologia:	Da C.S.